

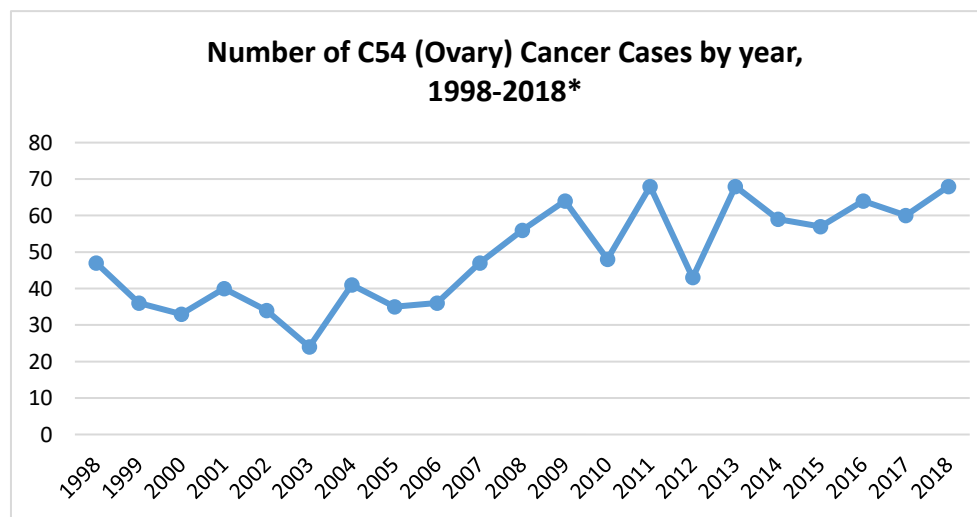


Cyprus Cancer Cases
Ovary Cancer
1998-2018

Anna Demetriou
Health Monitoring Unit
Ministry of Health
Cyprus

Tel: 22605390
Email: ADemetriou@moh.gov.cy
Φαξ: 22605527

Number of C54 (Ovary) Cancer Cases by year, 1998-2018*	
1998	47
1999	36
2000	33
2001	40
2002	34
2003	24
2004	41
2005	35
2006	36
2007	47
2008	56
2009	64
2010	48
2011	68
2012	43
2013	68
2014	59
2015	57
2016	64
2017	60
2018	68
Total	1028

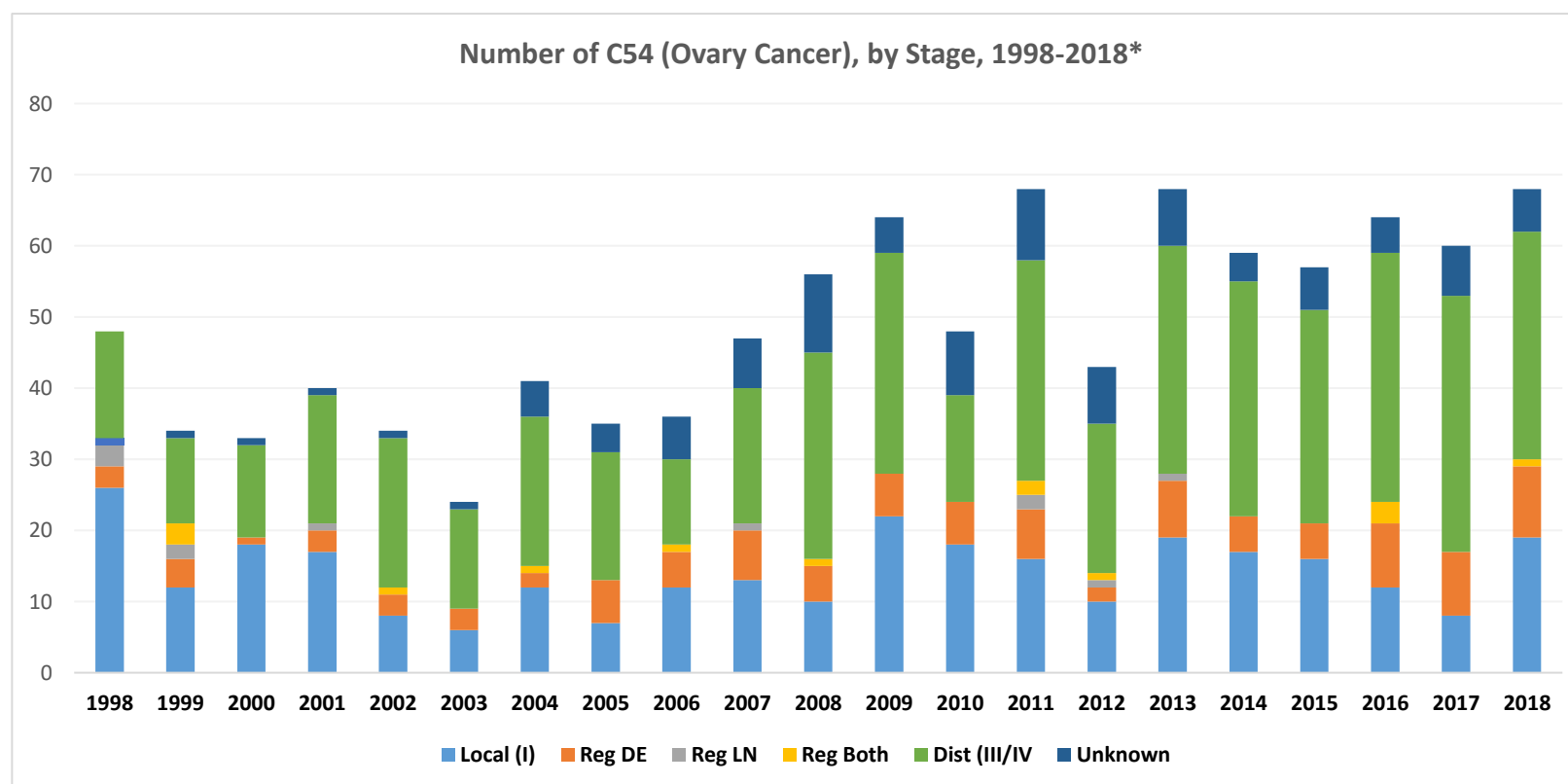


*Excluding In situ cases

Excluding cases of non-residents of the Cyprus Government Controlled Area

Including cases identified by Death Certificates Only

Number of C54 (Ovary Cancer), by Stage, 1998-2018*																							
Stage	Stage Desc	1998	1999	2000	2001	2002	2003	2004	2005	2006	2007	2008	2009	2010	2011	2012	2013	2014	2015	2016	2017	2018	Total
1	Local (I)	26	12	18	17	8	6	12	7	12	13	10	22	18	16	10	19	17	16	12	8	19	298
2	Reg DE	3	4	1	3	3	3	2	6	5	7	5	6	6	7	2	8	5	5	9	9	10	109
3	Reg LN	3	2	0	1	0	0	0	0	0	1	0	0	0	2	1	1	0	0	0	0	0	11
4	Reg Both	0	3	0	0	1	0	1	0	1	0	1	0	0	2	1	0	0	0	3	0	1	14
5	Reg NOS (II)	0	2	0	0	0	0	0	0	0	0	0	0	0	0	0	0	0	0	0	0	0	2
7	Dist (III/IV)	15	12	13	18	21	14	21	18	12	19	29	31	15	31	21	32	33	30	35	36	32	488
9	Unknown	0	1	1	1	1	1	5	4	6	7	11	5	9	10	8	8	4	6	5	7	6	106
Total		47	36	33	40	34	24	41	35	36	47	56	64	48	68	43	68	59	57	64	60	68	1028

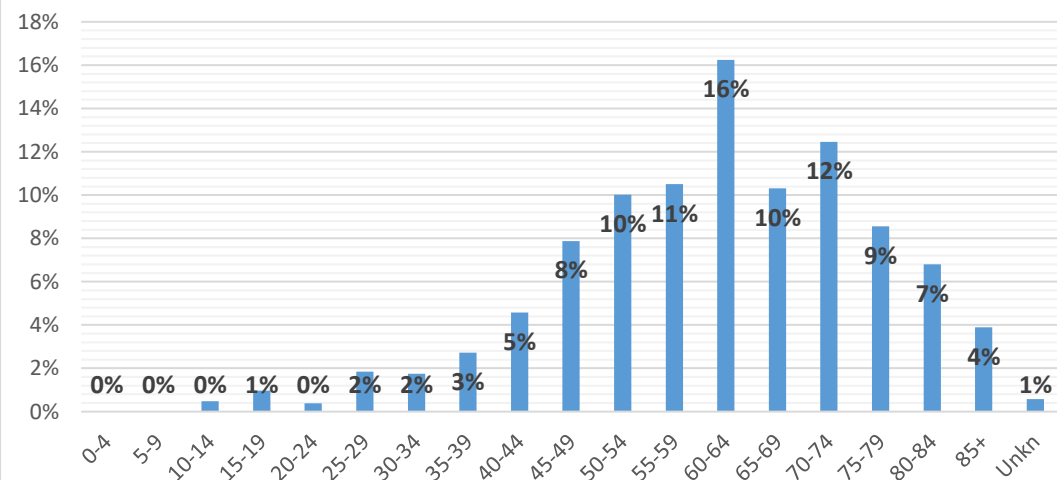


Excluding cases of non-residents of the Cyprus Government Controlled Area
 Including cases identified by Death Certificates Only

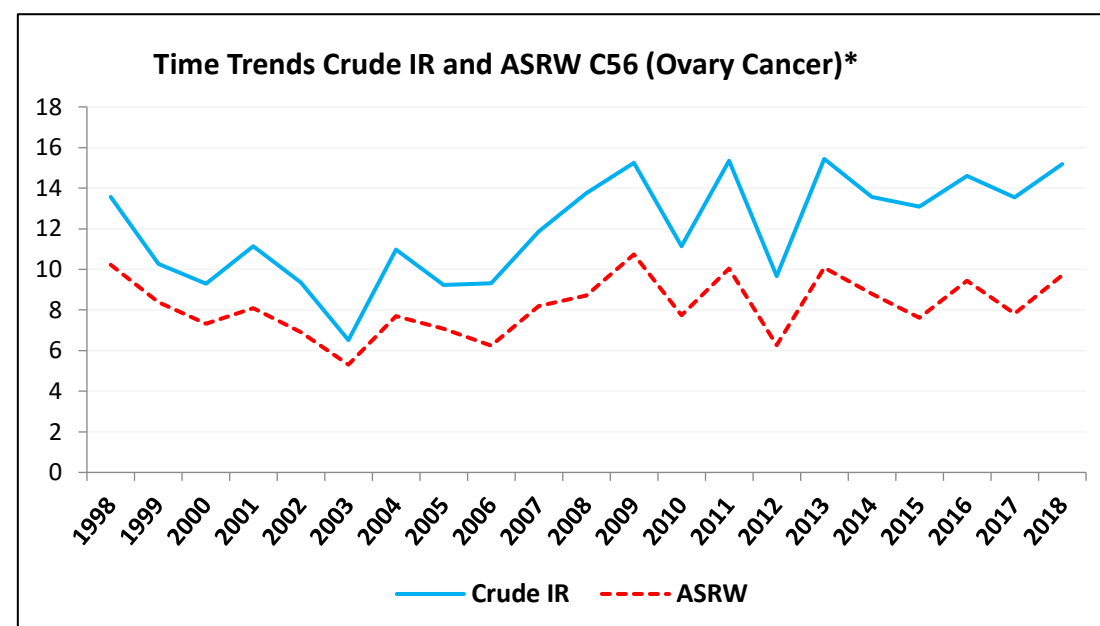
Number of C54 (Ovary Cancer), by Age Group, 1998-2018*

0-4	0	0%
5-9	0	0%
10-14	5	0%
15-19	10	1%
20-24	4	0%
25-29	19	2%
30-34	18	2%
35-39	28	3%
40-44	47	5%
45-49	81	8%
50-54	103	10%
55-59	108	11%
60-64	167	16%
65-69	106	10%
70-74	128	12%
75-79	88	9%
80-84	70	7%
85+	40	4%
Unkn	6	1%
Total	1028	100%

Number of C54 (Ovary Cancer), by Age Group, 1998-2018*



Time Trends in Crude Incidence Rate (Crude IR) and Age Standardised Incidence Rates (ASRW) for Ovary Cancer , per 100 000*																					
	1998	1999	2000	2001	2002	2003	2004	2005	2006	2007	2008	2009	2010	2011	2012	2013	2014	2015	2016	2017	2018
Crude IR	13.6	10.3	9.3	11.1	9.4	6.5	11.0	9.2	9.3	11.9	13.8	15.3	11.1	15.3	9.7	15.4	13.6	13.1	14.6	13.6	15.2
ASRW	10.2	8.4	7.3	8.1	6.9	5.3	7.7	7.1	6.3	8.2	8.7	10.7	7.7	10.0	6.3	10.1	8.8	7.6	9.4	7.8	9.7



*Excluding In situ cases

Excluding cases of non-residents of the Cyprus Government Controlled Area

Including cases identified by Death Certificates Only

DEFINITIONS:

Crude Incidence Rate :A crude (unadjusted) rate is calculated by dividing the number of new cancers observed during a given time period by the corresponding number of persons in the population at risk.The result is usually expressed a rate per 100,000 persons at risk.

ASR (age-standardized rate): An age-standardized rate (ASR) is a summary measure of the rate that a given population would have if it had a standard age structure. Standardization is necessary when comparing several populations that differ with respect to age because age has a powerful influence on the risk of cancer. The ASR is a weighted mean of the age-specific rates; the weights are given by population distribution of a standard population. The most frequently used standard population is the World Standard Population. The calculated incidence rate is then called age-standardized incidence rate (world). It is also expressed per 100,000.